

# Pennsylvania

## Voluntary Rescue Service Recognition

“A Voluntary Program for Rescue Services”

### Swiftwater Rescue/Flood Evacuation



March 1, 2009

PA DOH: Bureau of Emergency Medical Services  
Pennsylvania Fish and Boat Commission  
Office of the State Fire Commissioner

## **Contents**

Overview.....	3
Definitions.....	4-8
Summary of PA Categorization System.....	9-10

## **Listing of Tables**

Table 1 Rescue Categories & Capabilities.....	11
Table 2 Team Composition .....	12
Table 3 Training Requirements.....	13
Table 4 Equipment List.....	14
Table 5 Team Equipment .....	15-16
Table 6 Rescue Boat Equipment.....	17
Table 7 Personal Equipment.....	18

## **Appendices**

Appendix A Incident Check List.....	20-21
Appendix B Training Course Descriptions.....	22-26
Appendix C NIMS Training Compliance Documents.....	27-31
Appendix D Swiftwater/Flood Evacuation Inspection Checklist.....	32-45
Appendix E Swiftwater Rescue Roster.....	46-50
Appendix F Act 168 Form.....	51-52
Appendix G Application.....	53-56

## Overview

The Pennsylvania Voluntary Rescue Service Recognition (VRSR) Program was prepared by stakeholders including The Office of the State Fire Commissioner, The Bureau of EMS from The Pennsylvania Department of Health, The Pennsylvania Emergency Management Agency, and the Rescue Task Force of the Pennsylvania Emergency Health Services Council (PEHSC).

It is the intent of this portion of the program to recognize emergency service organizations in swiftwater rescue. This document not only takes into account the equipment and rescue hardware requirements of swiftwater rescue, but includes minimum manpower, training and education requirements.

The Voluntary Rescue Service Recognition (VRSR) program is intended to provide guidance and to develop recommendations for Pennsylvania swiftwater/flood evacuation including, but not limited to:

- Organizational development.
- Resource Identification and Categorization.
- Training and Equipment.
- Develop recommendations for staffing, training and equipment based on applicable standards.

This guidance is supported by NPFA standards 1006 and 1670.

## **Definitions**

## Definitions/Terms

<b>AHJ</b>	Authority Having Jurisdiction (AHJ) the organization, office or individual responsible for approving equipment, materials, installation, or a procedure.
<b>ALSR</b>	Advanced Line System Rescue.
<b>Animal Rescue</b>	The ability to deal with any animal, regardless of size, requiring assistance in a swiftwater/flood evacuation situation.
<b>Boat Drive – Air</b>	A boat with a propulsion system using an aviation propeller or a ducted fan to generate thrust from the engine having an on-plane draft of 0” to 12”.
<b>Boat Drive – Jet</b>	A boat with a propulsion system using a water pump to generate thrust having an on-plane draft of 6” to 12”.
<b>Boat Drive – Propeller</b>	A boat with a propulsion system using a propeller to generate thrust having an on-plane draft of 18” to 24”.
<b>Boat – Non-powered</b>	A non-motorized vessel capable of safely transporting rescuers or victims (e.g. raft, skiff, johnboat, etc).
<b>Boat - Powered</b>	A motorized vessel capable of safely transporting rescuers or victims (e.g. IRB: “Inflatable Rescue Boat”, RHIB: “Rigid Hull Inflatable Rescue Boat”, Rigid Hull Boat, PWC: “Personal Water Craft”, “Airboat”, etc).
<b>Decontamination</b>	Action required for chemically changing or physically removing the contaminants from personnel and equipment. The removal or neutralization of a hazardous material from equipment and/or personnel.
<b>DCNR</b>	Pennsylvania Department of Conservation and Natural Resources
<b>DOH</b>	Pennsylvania Department of Health
<b>EBOR</b>	Emergency Boat Operation & Rescue
<b>EMS</b>	Emergency Medical Services
<b>FEB</b>	Flood Evacuation Boat

<b>Flood Evacuation Team</b>	Personnel and equipment necessary to safely remove flood victims to higher ground – does not involve swiftwater rescue situations.
<b>Flood Evacuation</b>	The evacuation of stranded people and/or Animals from a place that is endangered by floodwaters to a confirmed safe place
<b>Flood Management Team</b>	Personnel possessing knowledge or expertise in flood mitigation procedures that may be called upon to provide technical support to an incident commander.
<b>Helicopter Awareness</b>	The ability to recognize safety zones and hazards associated with various types of aircraft.
<b>IRER</b>	Ice Rescue & Emergency Response.
<b>Life Safety Rope</b>	Rope dedicated solely for the purpose of supporting people during rescue, firefighting, other emergency operations, or during training evolutions. NFPA 1006 JPR 3.3.94
<b>NIMS</b>	National Incident Management System
<b>PFBC</b>	Pennsylvania Fish and Boat Commission
<b>PFD</b>	Personal Flotation Device (PFD) A device manufactured in accordance with U.S. Coast Guard specifications that provides supplemental flotation for persons in the water. NFPA 3.3.122
<b>PPE</b>	Personal protective equipment (PPE). The equipment provided to shield or isolate a person from the chemical, physical, or thermal hazards that can be encountered at a specific rescue incident. NFPA 3.3.123
<b>Public Safety Diving</b>	Underwater diving related to team operations and training, performed by any member, group or agency of a community or a government-recognized public safety diving or water rescue team. NFPA 1006 JPR 3.3.130
<b>PWC</b>	Personal watercraft (e.g. Jet Ski).

<b>Shore-Based Rescue</b>	A technique or procedure that provides a means for extracting a person from the water that does not require any member of the rescue team to leave the safety of the shore. NFPA 3.3.164
<b>Skill Proficiency &amp; Swim Demonstration</b>	Swim a designated water course that is representative of the bodies of water existing or anticipated within the geographic confines of the AHJ. All water rescue personal protective equipment, and swimming aids as required by that AHJ are used, all performance parameters are achieved, movement is controlled, hazards are continually assessed, distress signals are communicated, and rapid intervention for the rescuer has been staged for deployment. NFPA 1006 chapter 7 JPR 7.1.3.
<b>Surface Water Rescue</b>	Rescue of a victim who is afloat on the surface of a body of water. NFPA 3.3.193
<b>Swiftwater</b>	Water moving at a rate greater than 1 knot [1.85km/hr (1.15mph or 1.69 ft/sec)]. NFPA 3.3.194
<b>Throw Bag</b>	A water rescue system that includes 15.24m to 22.86 m (50 ft to 75 ft) of water rescue rope, an appropriately sized bag, and a closed-cell foam float. NFPA 3.3.202
<b>Unified Command</b>	Incident commanders from various jurisdictions or agencies operate together to form a single command structure. The incident commanders jointly determine objectives, strategies, plans and priorities and work together to execute integrated incident operations and maximize the use of assigned resources.
<b>Water Rescue Rope</b>	A rope that floats and that has adequate strength for anticipated use. Also, is not weakened to the point of inadequacy for the task by saturation or immersion in water, and is of sufficient diameter to be gripped by bare wet hands. NFPA 1006 Chapter 3.3.158.2

**Watermanship Skills**

Capabilities that include swimming, surface diving, treading water, and staying afloat with a reasonable degree of comfort appropriate to the required task.  
NFPA 3.3.226

**Water Rescue PPE**

(WRPPE) Personal equipment required to protect rescuers from physical damage posed by exposure to in-water hazards and also those hazards that are associated with the climate and the adjacent area.  
NFPA 3.3.123.1

**WRER**

Water Rescue & Emergency Response

**WRFR**

Water Rescue for the First Responder



# **PA Categorization System**

## **Summary of the Pennsylvania Categorization System**

Swiftwater/Flood Evacuation Team resources have been categorized by “type” of system which is dependent upon the size and function of the team. Typing in this document will attempt to follow NIMS standards. Pennsylvania does not currently possess non-military helicopter rescue capability, and therefore cannot comply with all aspects of the NIMS standards. As an alternative, we will utilize an alphanumeric designator for our team typing so as not to be confused with NIMS. For example 1a, 2a, etc. This typing is based on team qualifications, available equipment and training as needed for safe and efficient rescue operations for the Swiftwater/Flood Evacuation team.

It is the responsibility of recognized agencies responding to a request for Swiftwater/Flood Evacuation to provide qualified personnel and equipment that meet or exceed the recommended level of skills and capabilities stipulated by the Voluntary Rescue Service Recognition (VRSR) program.

### **Rescue Categories/Team Responsibilities:**

Type 1a Team: Highly complex rescues – 14 member all hazard teams require Advanced Life Support (ALS) component during long term deployments.

Type 2a Team: Moderately complex rescues –6 member all hazard team. No ALS component required for deployment.

Type 3a Team: Non-complex rescues – 4 member team.

Type 4a Team: Shore-based rescue operations only. 3 member team.

Flood Evacuation: Non-rescue situations only – 2 member team intended for ferrying flood victims to higher ground. Training and equipment limited to that which is necessary for safe watercraft operations.

**TABLE 1 CAPABILITIES & RESCUE TEAM REQUIREMENTS**

<b>Swiftwater Type 1a</b>	<b>Swiftwater Type 2a</b>	<b>Swiftwater Type 3a</b>	<b>Swiftwater Type 4a</b>	<b>Flood Evacuation</b>
<b>14 Member</b>	<b>6 Member</b>	<b>4 Member</b>	<b>3 Member</b>	<b>2 Member</b>
Swiftwater Technician	Swiftwater Technician	Swiftwater Technician	Swiftwater Operation	Swiftwater Operation
Boat Operations	Boat Operations	Boat Operations	Shore Base	Boat Operation
Advance Line System	Advance Line System	Advance Line System	Low Risk Operation	Low Risk Operation
Ice Operations	Ice Operations	Ice Operations		
EMS-ALS	EMS-ALS	EMS-BLS	EMS-BLS	EMS-BLS
Communication	Communication	Communication	Class 3 Paddle Skills	Class 3 Paddle Skills
Logistic	Logistic	Logistic	Contact & Self Rescue Skills	Decon
HazMat	HazMat	HazMat	HazMat (Capability)	HazMat (Capability)
Decon	Decon	Decon	Decon	
Hot Zone	Hot Zone - Supervision	Hot Zone - Supervision	Warm Zone	Warm Zone

**Table 1**

Table 1 identifies team capabilities and requirements based on the FEMA Resource Typing Document, 508-8 Typed Resource Definitions – Search and Rescue Resources November 2005. The Pennsylvania alpha numeric designator is used because PA does not currently possess all components necessary to meet the federal guideline, i.e.; non-military helicopter rescue capability.

**TABLE 2 TEAM COMPOSITION**

<b>Type 1a Inventory</b>	<b>Type 2a Inventory</b>	<b>Type 3a Inventory</b>	<b>Type 4a Inventory</b>	<b>Flood</b>
<b>Swiftwater</b>	<b>Boat</b>	<b>Boat</b>	<b>Operation</b>	<b>Evacuation</b>
14 Member Team:	6 Member Team:	4 Member Team:	3 Member Team:	2 Member Team:
2 Managers				
2 Squad Leaders	1 Squad Leader	1 Squad Leader	1 Squad Leader	1 Operator
10 Personnel	5 Personnel	3 Personnel	2 Personnel	1 Rescuer

**Table 2**

Table 2 identifies team composition based on the FEMA Resource Typing Document, 508-8 Typed Resource Definitions – Search and Rescue Resources November 2005. The Pennsylvania alpha numeric designator is used because PA does not currently possess all components necessary to meet the federal guideline, i.e.; non-military helicopter rescue capability.

## TABLE 3 TRAINING REQUIREMENTS

	Swiftwater Type 1a 14 Member	Swiftwater Type 2a 6 Member	Swiftwater Type 3a 4 Member	Swiftwater Type 4a 3 Member	Flood Evacuation
Annual Skills Proficiency Demonstration (by AHJ)	X	X	X	X	X
Annual Swim Demonstration (by AHJ)	X	X	X	X	X
EMS-Emergency Medical Technician/BLS	6	1	1	1	N/R+
EMS – Paramedic/ALS **	**	N/R+	N/R+	N/R+	N/R+
HazMat – Operations Level	X	X	X	X	N/R+
HazMat – Technician Level	1	*	*	*	N/R+
Helicopter Operations Awareness	X	X	*	*	N/R+
ICS -100	X	X	X	X	X
NIMS 700	X	X	X	X	X
ICS – Operations & Command Staff Based on position on team. Refer to Appendix C	*	*	*	*	*
ICS – 200 – Managers and Squad Leaders	4	1	1	1	*
Swiftwater/Flood Awareness PBFC – Water Rescue for First Responder	X	X	X	X	X
Swiftwater/Flood Operations PBFC – Water Rescue & Emergency Response	X	X	X	X	X
Swiftwater/Flood Technician PBFC – Emergency Boat Operation & Rescue	X	X	X	*	N/R+
Swiftwater/Flood Technician PFBC – Advanced Line System Rescue	X	X	X	*	N/R+
Swiftwater/Flood Technician PFBC – Ice Rescue & Emergency Response	X	X	*	*	N/R+
Search Management	X	X	X	X	N/R+

**Table 3**

Table 3 identifies mandatory and/or recommended team training requirements based on the FEMA Resource Typing Document, 508-8 Typed Resource Definitions – Search and Rescue Resources November 2005. The Pennsylvania alpha numeric designator is used because PA does not currently possess all components necessary to meet the federal guideline, i.e.; non-military helicopter rescue capability.

\*\* ALS/BLS staffing is to support the team members and not the general public. ALS component must be present at the scene and may be provided via mutual aid agreement. It is not a requirement of the team. Team must have in place a written policy to ensure ALS component is in place for deployment.

A number indicates the minimum number of members on the team with the indicated skills.

**X** indicates that this is a mandatory requirement for all team members.

\*

indicates a recommendation or that which is advised but not required

**N/R+** indicates not required

## TABLE 4 EQUIPMENT LIST

	Swiftwater Type 1a	Swiftwater Type 2a	Swiftwater Type 3a	Swiftwater Type 4a	Flood Evacuation
	14 Member	6 Member	4 Member	3 Member	2 Member
<b>COMMUNICATIONS</b>					
Mobile Radio	2	1	0	0	0
Bags, waterproof, radio	14	6	2	2	1
Battery, spare/charger	14	6	2	2	1
Headset, waterproof	14	6	4	0	0
Phone: cellular	2	1	1	1	1
Phone: satellite	2	1	0	0	0
Radio: portable	14	6	4	3	1
Dispatch to Response Unit Capabilities					
<b>MEDICAL</b>					
(Equipment to be carried as per protocol of the responding agency)					
Basic life support medical kit	1	1	1	1	1
Emergency blankets	14	6	4	0	0
Spine board (flotation back board)	4	1	1	1	0
Stokes type litter with flotation - plastic or metal	2	1	1	1	0

**Table 4**

Table 4 is a list of required team equipment based on the FEMA Resource Typing Document, 508-8 Typed Resource Definitions – Search and Rescue Resources November 2005. The Pennsylvania alpha numeric designator is used because PA does not currently possess all components necessary to meet the federal guideline, i.e.; non-military helicopter rescue capability.

\* indicates a recommendation or that which is advised but not required.

A number indicates the minimum number **required**

## TEAM EQUIPMENT

	Swiftwater Type 1a	Swiftwater Type 2a	Swiftwater Type 3a	Swiftwater Type 4a	Flood Evacuation
	14 Member	6 Member	4 Member	3 Member	2 Member
<b>TEAM EQUIPMENT</b>					
Air monitors	2	1	0	0	0
Axe/handsaw	2	1	1	1	1
Body bag	4	2	2	*	*
Brake bar racks	4	2	*	0	0
Carabineer, locking "D" steel	14	12	12	0	0
Chainsaw w/kit	1	1	*	*	*
Collection rings/Accountability	4	2	*	0	0
Compass	2	*	1	*	*
Dust mask, disposable	14	6	4	3	2
Edge protection	4	4	2	0	0
Rigging plates	4	2	2	*	0
Forcible entry tool	2	1	1	1	1
Fuel cans, transportable	4	3	2	0	2
Generator with light attachment	1	0	0	0	0
GPS, hand-held	4	2	*	*	*
Hammer, sledge	2	1	*	*	0
Helmet, victim	4	2	*	*	*
Jacket, exposure	14	6	4	3	2
Knot passing pulleys, rescue rated	2	2	0	0	0
Line thrower	2	1	*	*	0
Mask, dive	*	*	*	0	0
Megaphone/PA	1	1	*	*	*
Night vision, hand	*	*	*	*	*
PFD, Type III, victim assortment (USCG approved & child)	10	5	4	4	4
Pole, reaching (pike or equivalent)	2	1	1	1	1
Prusik's 8mm	12	6	4	2	0
Pulleys, rescue rated	12	6	2	2	0

**Table 5**

Table 5 is a list of required and/or recommended team equipment based on the FEMA Resource Typing Document, 508-8 Typed Resource Definitions – Search and Rescue Resources November 2005. The Pennsylvania alpha numeric designator is used because PA does not currently possess all components necessary to meet the federal guideline, i.e.; non-military helicopter rescue capability.

\* indicates a recommendation or that which is advised but not required.

A number indicates the minimum number required

## TEAM EQUIPMENT Continued

	Swiftwater Type 1a	Swiftwater Type 2a	Swiftwater Type 3a	Swiftwater Type 4a	Flood Evacuation
	14 Member	6 Member	4 Member	3 Member	2 Member
<b>TEAM EQUIPMENT</b>					
Rope 200' w/bag (life safety) ½" minimum (dedicated solely for supporting people during emergency operations and training evolutions)	4	2	2	1	0
Rope 300' w/bag (life safety) ½" minimum (dedicated solely for supporting people during emergency operations and training evolutions)	3	2	1	0	0
Rope 600' w/bag (life safety) ½" minimum (solely for supporting people during emergency ops and training )	1	1	0	0	0
Search dog flotation device	1	1	0	0	0
Shovel, hand	2	1	1	1	0
Snorkel	*	*	*	0	0
Storage containers as needed	*	*	*	*	*
Swimmer rescue board	4	2	2	0	0
Throw bags: poly 3/8 or greater, Various lengths. 50 to 75 ft of water rescue rope appropriately sized bag and closed cell foam float	14	6	4	3	2
Water sample kit	2	1	1	1	1
Webbing 1" x 20' nylon tubular (green)	20	12	8	4	0
Webbing 1" x 50' nylon tubular (yellow)	8	6	3	0	0

**Table 5 con't**

Table 5 is a list of required and/or recommended team equipment based on the FEMA Resource Typing Document, 508-8 Typed Resource Definitions – Search and Rescue Resources November 2005. The Pennsylvania alpha numeric designator is used because PA does not currently possess all components necessary to meet the federal guideline, i.e.; non-military helicopter rescue capability.

\* indicates a recommendation or that which is advised but not required.

A number indicates the minimum number required



## RESCUE BOAT EQUIPMENT

	Swiftwater Type 1a	Swiftwater Type 2a	Swiftwater Type 3a	Swiftwater Type 4a	Flood Evacuation
	14 Member	6 Member	4 Member	3 Member	2 Member
<b>RESCUE BOATS</b>					
Air, manual inflation pump	2	1	1	0	1
Boat, non-powered, 4 person minimum, self bailing	0	0	1	0	1
Kit, patch/repair/maintenance (appropriate for each type boat deployed)	1	1	0	0	1
Lanyard, wrist, kill switch	4	2	0	0	1
Boat with motor, 15HP (minimum), or based on the manufacturer's minimum power recommended, prop w/guard or jet. A minimum of one (1) self-bailing boat is required. Each boat must be equipped in a manner to meet all state boating law requirements.	2	1	0	0	1
Motor flush kit, appropriate to boat	2	1	0	0	1
Paddles 2 per boat	8	4	0	0	1
Prop, spare 1 per boat	2	1	0	0	1
Bail-out system 1 per boat	4	0	0	0	0
Fire extinguisher minimum of 1 per boat, must meet fed/state requirement	1	1	0	0	1
Oils, fuels	1	1	1	0	1
Compressed air cylinder (60 min/IRB inflation)	*	*	*	*	0
Sound producing device, 1 per boat	1	1	1	0	1
Throwable flotation device (USCG approved)	2	1	1	*	1

**Table 6**

Table 6 is a list of required and/or recommended rescue boat equipment based on the FEMA Resource Typing Document, 508-8 Typed Resource Definitions – Search and Rescue Resources November 2005. The Pennsylvania alpha numeric designator is used because PA does not currently possess all components necessary to meet the federal guideline, i.e.; non-military helicopter rescue capability.

\* indicates a recommendation or that which is advised but not required.

A number indicates the minimum number required

## PERSONAL EQUIPMENT

	Swiftwater Type 1a	Swiftwater Type 2a	Swiftwater Type 3a	Swiftwater Type 4a	Flood Evacuation
<b>PERSONAL EQUIPMENT</b>	<b>14 Member</b>	<b>6 Member</b>	<b>4 Member</b>	<b>3 Member</b>	<b>2 Member</b>
Aerial flares	28	12	8	6	4
Carabineers	28	12	8	6	4
Dry gear bags	6	4	2	0	0
Dry suits	14	6	2	3	0
Eye protection	14	6	4	3	2
Flashlight	14	6	4	3	2
Gloves - water	14	6	4	3	2
Gloves - leather	14	6	4	3	2
Handheld flares	14	6	4	0	2
Headlamps, waterproof	14	6	4	3	2
Helmet, swiftwater	14	6	4	3	2
Ice saws	4	2	2	0	0
Ice staphs	4	2	2	0	0
Chemical light sticks	14	6	4	3	2
PFD, Type V, tethered swimmer (USCG approved) required on type 1a	14	6	4	0	0
PFD, Type III (USCG approved) required on type 2a, 3a, 4a and Flood Evacuation		0	0	3	2
Rescue knives	14	6	4	3	2
Water boots no dive type booties	14	6	4	3	2
Whistles	14	6	4	3	2

**Table 7**

Table 7 is a list of required and/or recommended personal equipment based on the FEMA Resource Typing Document, 508-8 Typed Resource Definitions – Search and Rescue Resources November 2005. The Pennsylvania alpha numeric designator is used because PA does not currently possess all components necessary to meet the federal guideline, i.e.; non-military helicopter rescue capability.

\* indicates a recommendation or that which is advised but not required.

A number indicates the minimum number required.

Note: The personal equipment inventory listed is based on the above referenced team composition, therefore teams deploying with additional personnel should adjust their equipment requirements accordingly.

## **Appendices**

*Appendices A, B and C are not a part of the requirements of this document but contain explanatory materials for informational purposes only*

*Appendices D, E, F and G contain required documentation*

**APPENDIX A**  
**INCIDENT CHECK LIST**

## **Incident Check List**

- \_\_\_ Utilize Swiftwater Personal Protective Equipment
- \_\_\_ Evaluate Incident
- \_\_\_ Initiate Pre-planned Response
- \_\_\_ Police-Fire-EMS
- \_\_\_ Specialized Resources
- \_\_\_ Determine Other Needs
- \_\_\_ Contact ICS
- \_\_\_ Establish Communication
- \_\_\_ Establish Accountability System (**Compliant with NFPA 1561 and 29 CFR 1926.800**)
- \_\_\_ Establish Search Area and/or Boundaries
- \_\_\_ Identify Incident Hazards
- \_\_\_ Establish Operational Area
- \_\_\_ Interview Reporting Parties
- \_\_\_ Determine Victims Last Point Seen
- \_\_\_ Consider Evacuation Plan
- \_\_\_ Consider Staging Area
- \_\_\_ Establish Up Stream and Down Stream Safety
- \_\_\_ Implement Search and Rescue Operations
- \_\_\_ Determine Rescue vs. Recovery
- \_\_\_ Evaluate Low to High Risk Operation
- \_\_\_ Contingency Plan
- \_\_\_ Medical and/or Casualty Plan
- \_\_\_ Decontamination of Victims
- \_\_\_ Establish Logistic Support

Additional information such as a Dive checklist, Site Diagram and other Pertinent Information can be found in NFPA 1006 Annex A

## **APPENDIX B**

### **TRAINING COURSE DESCRIPTIONS**



## Pennsylvania Fish and Boat Commission Water Rescue Programs



The courses in the PA Fish & Boat Commission's Water Rescue Program are designed to train water rescue personnel in the most current techniques of water rescue and safety. The program's purpose is to familiarize the rescuer with personal/team safety, the proper procedures used in water/ice safety, and emergency boat operations. The rescuer will develop and demonstrate proficiency in water rescue techniques relative to his or her individual capabilities. This results in the rescuer developing a greater sense of competency in dealing with on-the-water emergencies.

The program is designed to train fire, rescue, ems, police, park, and other emergency services personnel. The minimum age for attending any water rescue course is 18 years-of-age.

Pennsylvania Fish & Boat Commission employees and Pennsylvania Fish & Boat Commission certified instructors teach these courses. Instructor training can be arranged by contacting the Pennsylvania Fish & Boat Commission's Bureau of Boating and Education at 717-705-7833, or by visiting the Commission's website at [www.fish.state.pa.us](http://www.fish.state.pa.us)

**Special Note:** Students enrolled in the Pennsylvania Fish & Boat Commission Water Rescue Programs must be prepared to engage in strenuous activities in extreme weather and water conditions. If a student has a known medical condition that could foreseeably jeopardize his/her safety during participation or be aggravated by participation, the student should not participate. All rescues contained in the Pennsylvania Fish & Boat Commission Water Rescue Programs are based on simple and effective techniques. A U.S. Coast Guard approved personal flotation device (PFD), water rescue helmet, and appropriate clothing for water and weather conditions must be worn by the student at all times when practicing or attempting any of the recommended rescues.

### **NFPA 1006 Technician Level:**

Students who complete the Water Rescue and Emergency Response, Emergency Boat Operations and Rescue, Ice Rescue and Emergency Response, and Advanced Line Systems Rescue, are in compliance with the NFPA 1006 Professional Qualifications for Swiftwater Rescue Technician Level; and should be well prepared to successfully complete the National Pro-Board certification testing for Swiftwater Rescue-Technician Level.



## **Pennsylvania Fish and Boat Commission Swiftwater Rescue Training Levels**



**Awareness:** Knowledge based course of instruction on emphasizing hazards and personnel safety and planning. Course is generally lecture only.

**Operation:** Participation based course of instruction, emphasizing personal safety, planning, team safety and limited low risk victim rescue. The course generally includes objectives evaluation and testing.

**Technician:** Performance based course of instruction, emphasizing personal safety, planning team safety, and mid-risk to high-risk victim rescue. These courses generally include objectives, evaluation and testing.



**Pennsylvania Fish and Boat Commission**  
**COURSE OUTLINES**

**Water Rescue for the First Responder (1670 – Awareness Level)** (2 - 2.5 hours)

Classroom course covers: scene assessment, activation of the Emergency Response System, evaluation of potential and existing water hazards, scene management, rescue vs. recovery, and personal safety measures. Meets or exceeds NFPA 1670 Awareness-level guidelines.

**Water Rescue & Emergency Response** (16 hours) – Covers valuable swiftwater rescue techniques. Classroom and practical hands-on training includes: planning, medical considerations, rescue equipment, self-rescue and shore-based rescue techniques. Meets or exceeds NFPA 1670 Operations-level guidelines.

**Emergency Boat Operation & Rescue** (16 hours) – Must have course for any rescue unit involved with on-the-water operations. Includes classroom and practical hands-on training in: boat selection, recommended equipment, boat handling, moving-water tactics, and boat rescue techniques. Meets or exceeds NFPA 1670

Technician-level guidelines. Pre-requisite: Water Rescue & Emergency Response.

**Ice Rescue & Emergency Response** (12-16 hours) – An essential course for any Rescue unit involved with ice rescue. Includes classroom and practical hands-on training in: identifying ice conditions, using ice rescue equipment, and practicing shore, boat, and direct contact rescue techniques. Meets or exceeds NFPA 1670 Technician-level guidelines. Pre-requisite: Water Rescue & Emergency Response.

**Advanced Line Systems Rescue** (16 hours) - Includes classroom and practical hands-on training. Students learn to select the appropriate line system for the situation, establish and operate the system, affect the rescue or recovery, and to tear down the system. Subjects include line and hardware equipment, knots, and advanced line systems techniques. Meets or exceeds NFPA 1670 Technician level guidelines. Pre-requisite: Water Rescue & Emergency Response.

## **Other Course Outlines**

**Helicopter Safety Course** – DOH EMS approved con-ed course.

#001636 – Helicopter Safety: The objective of this course is to teach responders how to use medical helicopters appropriately for trauma transport and how to operate safely around medical helicopters. Subjects covered will include: indications for air medical transport, air vs. ground transport decisions, communications, helicopter types, weather, helicopter operations, helicopter safety, and the establishment of safe landing zones

**Search Management Course** – DOH EMS approved con-ed courses.

#002462 – PA DCNR Grid Search II: This is an advanced 8 hour course training in Map and Compass for use in Search and Rescue operations. Basic Skills in Patient Assessment and Packaging. Basic Skills in Patient Evacuation prepares students for basic tasks needed at the start of a Search and Rescue. PA Department of Conservation and Natural Resources, Hasty Team Search and Rescue Training.

#003249 – Managing Search Operations. This is a 40 hour course which deals with the basics of managing a lost person search incident.

#002459- PA DCNR Hasty Team Search and Rescue: This is an 8 hour course that prepares the student for basic tasks needed to start a search and rescue operation. Provides training for emergency life-saving survival skills to search for members. Provides map and compass skills, search and rescue technique training, and training on proper clothing and gear to prevent cold or heat related medical emergencies. Prepares students for basic tasks needed at the start of a Search and Rescue.

#002460 – PA DCNR Search Responder is a 16 hour course which prepares the student to assist in Search and Rescue planning, locate and use Search and Rescue resources, know Clue Awareness & Investigation skills, understand the basics of a lost person, and participate in field rescue operations.

### **Large & Small Animal Water Rescue Courses**

**Rescue 3 – Technical Animal Rescue Course:** This three-day course teaches students how to rescue animals without becoming victims. Subjects covered include rescuer safety, equipment, and animal behavior in rescues, basic first-aid for animals, communication techniques during emergencies, and how to use ropes to maneuver a boat safely to the victim. For more information go to [www.rescue3.com](http://www.rescue3.com).

**APPENDIX C**

**NIMS COMPLIANCE  
TRAINING DOCUMENTS**

## Commonwealth of Pennsylvania NIMS ICS Equivalency Chart

COURSE TITLE	TRAINING PROVIDER	ICS EQUIVALENCE LEVEL	COMMENTS
I-100 Intro to ICS	NWCG	100	
ICS 100, Introduction to the Incident Command System	EMI	100	
IS-195 Introduction to the Incident Command System (ICS)	EMI	100	No longer offered Dec 2005
Q-462 ICS-100 Introduction to ICS for Operational First Responders	NFA	100	
ICS 100, Introduction to the Incident Command System for Law Enforcement	EMI	100	
ICS 100, Introduction to the Incident Command System for Public Works Personnel	EMI	100	
G-191 Incident Command System/Emergency Operations Center (ICS/EOC) Interface	EMI	100	Under Revision
ICS 100, Introduction to the Incident Command System for Federal Disaster Workers	EMI	100	
04/322 Incident Command System	MPOETC	100	No longer offered 1/1/06
Incident Command System	PSP	100	No longer offered 1/1/06
Incident Command System	PDC	100	
WMD Incident Command Training Course	CDP	200	
Works	EMI	200	No longer offered Dec 2005
G-194 Incident Command System (ICS) for Public Officials	EMI	200	No longer offered Dec 2005
E-449 Incident Command System (ICS) Curricula TTT	EMI	200	Will be updated to 400 level
F-163/W-163 NIMS - Incident Command System for Emergency Medical Services	NFA	200	Course includes 100 and 200 level See key for course delivery methods
F-321/W-321 Incident Command for Highrise Operations	NFA	200	See key for course delivery methods
F-322/W-322 Incident Command System for Structural Collapse Incidents	NFA	200	See key for course delivery methods
F-806/W-806 NIMS - Incident Command System for the Fire Service	NFA	200	Course includes 100 and 200 level See key for course delivery methods
Incident Command System	NFA/SFA	200	Course no longer offered replaced by NIMS - Incident Command System for the Fire Service
Hazardous materials Incident management-IAFF (HMIM)	SFA	200	
Incident Command for Highrise Operations (ICHO)	NFA/SFA	200	
Incident Command System for Structural Collapse Incidents (ICSSI)	NFA/SFA	200	
Incident Command System for Emergency Medical Services (ICSEMS)	NFA/SFA	200	Course no longer offered replaced by NIMS - Incident Command System for the Emergency Medical Services
I-200 Basic ICS	NWCG	200	
Q-463 ICS-200 Basic ICS for Operational First Responders	NFA	200	

Version # 8 Current as of:  
07/13/07

## Commonwealth of Pennsylvania NIMS ICS Equivalency Chart

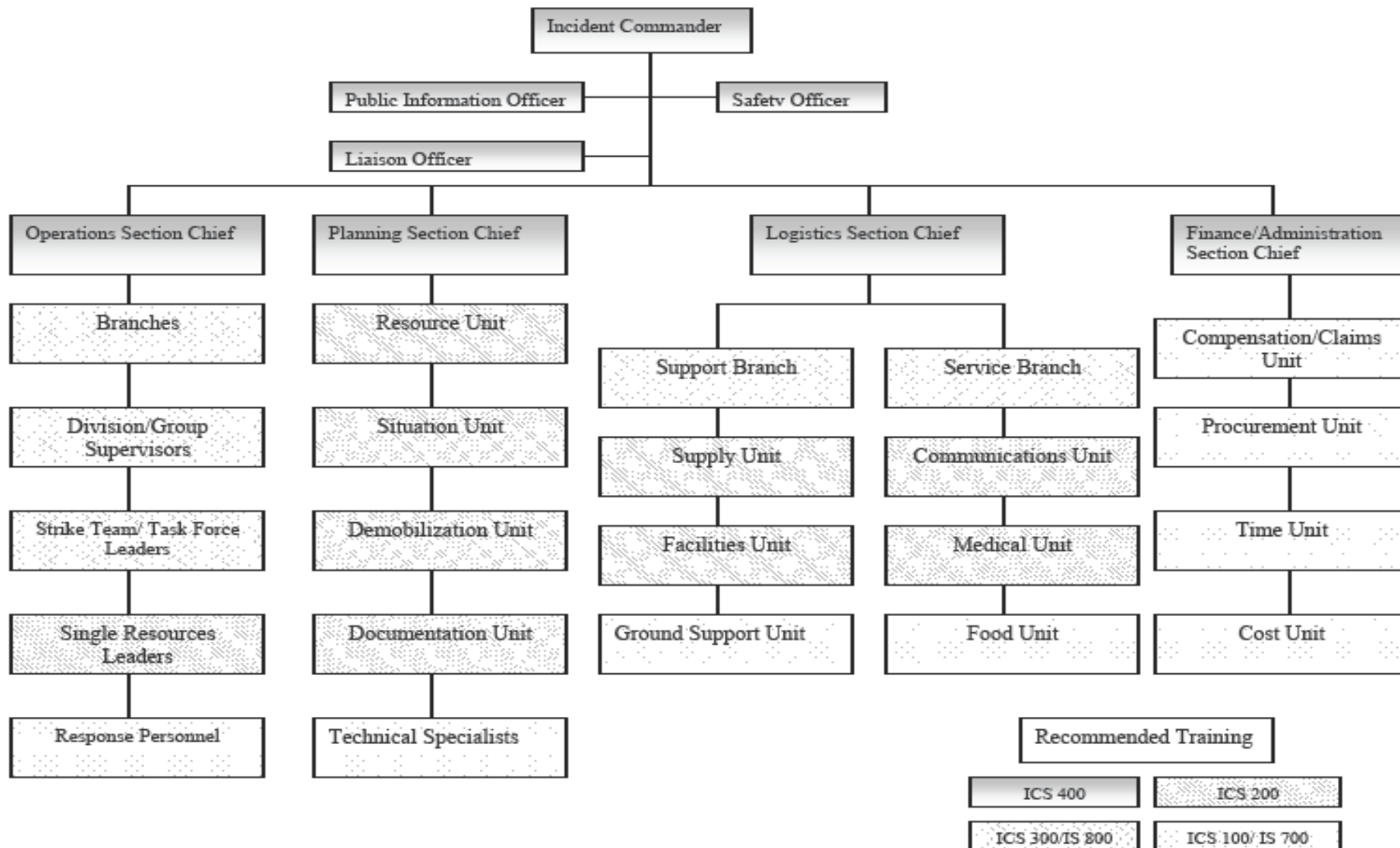
COURSE TITLE	TRAINING PROVIDER	ICS EQUIVALENCE LEVEL	COMMENTS
R-304 Command and Control of Fire Department Operations at Multi-Alarm Incidents	NFA	200	
R-314 Command and Control of Fire Department Operations at Target Hazards	NFA	200	
IS-200 ICS for Single Resources and Initial Action Incidents	EMI	200	
IS-200 FW: Basic Incident Command for Federal Disaster Workers	EMI	200	
G-195 Intermediate Incident Command System	EMI	200	
N-831 Command and Control of Incident Operations	NFA	200	
O-229/R-229 HazMat Operating Site Practices	NFA	200	See key for course delivery methods
F-315/W315 Introduction to Unified Command for Multi-Agency and Catastrophic Incidents	NFA	200	See key for course delivery methods
Q316 Introduction to Command and General Staff	NFA	200	No longer offered replaced by Q462 and Q463
R-308 Command & Control of Fire Dept Ops at Nat. & Man-Made Disasters	NFA	300	
I-300 Intermediate ICS	NWCG	300	
O465 ICS-300 Intermediate ICS for Expanding Incidents for Operational first Responders	NFA	300	Available through States approximately May 2006
S-400 Incident Commander	NWCG	300	
S-420 Command and General Staff	NWCG	300	
S-620 Area Command	NWCG	300	
G300 Incident Command System (ICS), Intermediate, I-300	EMI	300	
R 152 EMS Special Operations	NFA	300	
O-243/R-243/N814 Hazardous Materials Incident Management	NFA	300	See key for course delivery methods
R-306 Executive Analysis of Fire Service Operations in Emergency Management	NFA	400	
O-467 ICS-400 Advanced ICS for Command and General Staff, Complex Incidents for Operational First Responders	NFA	400	Available through States approximately May 2006
G400 Incident Command System (ICS), Advanced, I400	EMI	400	
R-317 Command and General Staff Functions in the Incident Command System	NFA	400	Course includes 300 and 400 levels
G-196 Advanced Incident Command System (ICS)	EMI	400	No longer offered Dec 2005
I-400 Advanced ICS	NWCG	400	
I-401 Multi-Agency Coordination	NWCG	400	
O-305 All-Hazards Incident Management Team course	NFA	400	
MGT313 — WMD: Incident Management / Unified Command	TEEX	300	NEW
HICS IV- Hospital Incident Command Course version IV	developed by state of California	200	NEW

## Commonwealth of Pennsylvania NIMS ICS Equivalency Chart

CDP- Center for Domestic Preparedness  
NWCG- National Wildfire Coordinating Group  
EMI- Emergency Management Institute  
G-State Delivered  
IS-Self Study  
E-Resident  
NFA- National Fire Academy  
W-State Weekend Delivery  
F-Direct Delivery  
N-Regional Delivery  
Q-Self Study  
R-Resident  
O-Off Campus  
SFA- State Fire Academy  
PSP- Pennsylvania State Police  
MPOETC- Municipal Police Officers' Education and Training Commission  
PDC- Pennsylvania Department of Corrections

Version # 8 Current as of:  
07/13/07

# ICS Training Levels



**APPENDIX D**

**INSPECTION CHECKLISTS**



Swiftwater Rescue / Flood Evacuation  
Swiftwater **Type 1a** Inspection Checklist

Organization Name \_\_\_\_\_ Date of Inspection \_\_\_\_\_

	Swiftwater Type 1a	Present	Deficient	Corrected at Re- inspection
	<b>14 Member</b>			
<b>COMMUNICATIONS</b>				
Mobile Radio	2			
Bags, waterproof, radio	14			
Battery, spare/charger	14			
Headset, waterproof	14			
Phone: cellular	2			
Phone: satellite	2			
Radio: portable	14			
<b>MEDICAL</b>				
(Equipment to be carried as per protocol of the responding agency)				
Basic life support medical kit	1			
Emergency blankets	14			
Spine board (flotation back board)	4			
Stokes type litter with flotation - plastic or metal	2			
<b>TEAM EQUIPMENT</b>				
Air monitors	2			
Axe/handsaw	2			
Body bag	4			
Brake bar racks	4			
Carabineer, locking "D" steel	14			
Chainsaw w/kit	1			
Collection rings/Accountability	4			
Compass	2			
Dust mask, disposable	14			
Edge protection	4			
Rigging plates	4			
Forcible entry tool	2			
Fuel cans, transportable	4			
Generator with light attachment	1			
GPS, hand-held	4			
Hammer, sledge	2			
Helmet, victim	4			
Jacket, exposure	14			
Knot passing pulleys, rescue rated	2			
Line thrower	2			
Mask, dive	*			
Megaphone/PA	1			

Swiftwater Rescue / Flood Evacuation  
Swiftwater **Type 1a** Inspection Checklist

Organization Name \_\_\_\_\_ Date of Inspection \_\_\_\_\_

	Swiftwater Type 1a	Present	Deficient	Corrected at Re- inspection
<b>TEAM EQUIPMENT</b>				
Night vision, hand	1			
PFD, Type III, victim assortment (USCG approved & child)	10			
Pole, reaching (pike or equivalent)	2			
Prusik's 8mm	12			
Pulleys, rescue rated	12			
Rope 200' w/bag (life safety) ½" minimum (dedicated solely for supporting people during emergency operations and training evolutions)	4			
Rope 300' w/bag (life safety) ½" minimum (dedicated solely for supporting people during emergency operations and training evolutions)	3			
Rope 600' w/bag (life safety) ½" minimum (solely for supporting people during emergency ops and training )	1			
Search dog flotation device	1			
Shovel, hand	2			
Snorkel	*			
Storage containers as needed	*			
Swimmer rescue board	4			
Throw bags: poly 3/8 or greater, Various lengths. 50 to 75 ft of water rescue rope appropriately sized bag and closed cell foam float	14			
Water sample kit	2			
Webbing 1" x 20' nylon tubular (green)	20			
Webbing 1" x 50' nylon tubular (yellow)	8			
<b>RESCUE BOATS</b>				
Air, manual inflation pump	2			
Kit, patch/repair/maintenance (appropriate for each type boat deployed)	1			
Lanyard, wrist, kill switch	2			
Boat with motor, 15HP (minimum), or based on the manufacturer's minimum power recommended, prop w/guard or jet. A minimum of one (1) self-bailing boat is required. Each boat must be equipped in a manner to meet all state boating law requirements.	2			
Motor flush kit, appropriate to boat	2			
Paddles 2 per boat	4			
Prop, spare 1 per boat	2			

	Swiftwater Type 1a	Present	Deficient	Corrected at Re- inspection
<b>RESCUE BOATS</b>				
Bail-out system 1 per boat	2			
Fire extinguisher minimum of 1 per boat, must meet fed/state requirement	1			
Oils, fuels	1			
Compressed air cylinder (60 min/IRB inflation)	*			
Sound producing device, 1 per boat	1			
Throwable flotation device (Ring-USCG approved)	2			
<b>PERSONAL EQUIPMENT</b>				
Aerial flares	28			
Carabineers	28			
Dry gear bags	6			
Dry suits	14			
Eye protection	14			
Flashlight	14			
Gloves - water	14			
Gloves - leather	14			
Handheld flares	14			
Headlamps, waterproof	14			
Helmet, swiftwater	14			
Ice saws	4			
Ice staphs	4			
Chemical light sticks	14			
PFD, Type V, tethered swimmer (USCG approved) required on type 1a	14			
Rescue knives	14			
Water boots no dive type booties	14			
Whistles	14			

Swiftwater Rescue / Flood Evacuation  
Swiftwater **Type 2a** Inspection Checklist

Organization Name \_\_\_\_\_ Date of Inspection \_\_\_\_\_

	<b>Swiftwater Type 2a</b>	<b>Present</b>	<b>Deficient</b>	<b>Corrected at Re- inspection</b>
	<b>6 Member</b>			
<b>COMMUNICATIONS</b>				
Mobile radio	1			
Bags, waterproof, radio	6			
Battery, spare/charger	6			
Headset, waterproof	6			
Phone: cellular	1			
Phone: satellite	1			
Radio: portable	6			
<b>MEDICAL</b>				
(Equipment to be carried as per protocol of the responding agency)				
Basic life support medical kit	1			
Emergency blankets	6			
Spine board (flotation back board)	1			
Stokes type litter with flotation - plastic or metal	1			
<b>TEAM EQUIPMENT</b>				
Air monitors	1			
Axe/handsaw	1			
Body bag	2			
Brake bar racks	2			
Carabineer, locking "D" steel	12			
Chainsaw w/kit	1			
Collection rings/Accountability	2			
Compass	*			
Dust mask, disposable	6			
Edge protection	4			
Rigging plates	2			
Forcible entry tool	1			
Fuel cans, transportable	3			
GPS, hand-held	2			
Hammer, sledge	1			
Helmet, victim	2			
Jacket, exposure	6			
Knot passing pulleys, rescue rated	2			
Line thrower	1			
Mask, dive	*			
Megaphone/PA	1			

Swiftwater Rescue / Flood Evacuation  
Swiftwater **Type 2a** Inspection Checklist

Organization Name \_\_\_\_\_ Date of Inspection \_\_\_\_\_

		Present	Deficient	Corrected at Re-inspection
<b>TEAM EQUIPMENT</b>				
Night vision, hand	*			
PFD, Type III, victim assortment (USCG approved & child)	5			
Pole, reaching (pike or equivalent)	1			
Prusik's 8mm	6			
Pulleys, rescue rated	6			
Rope 200' w/bag (life safety) ½" minimum (dedicated solely for supporting people during emergency operations and training evolutions)	2			
Rope 300' w/bag (life safety) ½" minimum (dedicated solely for supporting people during emergency operations and training evolutions)	2			
Rope 600' w/bag (life safety) ½" minimum (solely for supporting people during emergency ops and training )	1			
Search dog flotation device	1			
Shovel, hand	1			
Snorkel	*			
Storage containers as needed	*			
Swimmer rescue board	2			
Throw bags: poly 3/8 or greater, Various lengths. 50 to 75 ft of water rescue rope appropriately sized bag and closed cell foam float	6			
Throwable flotation device (USCG approved)	1			
Water sample kit	1			
Webbing 1" x 20' nylon tubular (green)	12			
Webbing 1" x 50' nylon tubular (yellow)	6			
<b>RESCUE BOATS</b>				
Air, manual inflation pump	1			
Kit, patch/repair/maintenance (appropriate for each type boat deployed)	1			
Lanyard, wrist, kill switch	2			
Boat with motor, 15HP (minimum), or based on the manufacturer's minimum power recommended, prop w/guard or jet. A minimum of one (1) self-bailing boat is required. Each boat must be equipped in a manner to meet all state boating law requirements.	1			
Motor flush kit, appropriate to boat	1			
Paddles 2 per boat	2			

		Present	Deficient	Corrected at Re-inspection
<b>RESCUE BOATS</b>				
Prop, spare 1 per boat	1			
Bail-out system 1 per boat	1			
Fire extinguisher minimum of 1 per boat, must meet fed/state requirement	1			
Oils, fuels	1			
Compressed air cylinder (60 min/IRB inflation)	*			
Sound producing device, 1 per boat	1			
<b>PERSONAL EQUIPMENT</b>				
Aerial flares	12			
Carabineers	12			
Dry gear bags	4			
Dry suits	6			
Eye protection	6			
Flashlight	6			
Gloves - water	6			
Gloves - leather	6			
Handheld flares	6			
Headlamps, waterproof	6			
Helmet, swiftwater	6			
Ice saws	2			
Ice staphs	2			
Chemical light sticks	6			
PFD, Type V (USCG approved)	6			
Rescue knives	6			
Water boots no dive type booties	6			
Whistles	6			

Swiftwater Rescue / Flood Evacuation  
 Swiftwater **Type 3a** Inspection Checklist

Organization Name \_\_\_\_\_ Date of Inspection \_\_\_\_\_

	<b>Swiftwater Type 3a</b>	<b>Present</b>	<b>Deficient</b>	<b>Corrected at Re- inspection</b>
	<b>4 Member</b>			
<b>COMMUNICATIONS</b>				
Bags, waterproof, radio	2			
Battery, spare/charger	2			
Headset, waterproof	4			
Phone: cellular	1			
Radio: portable	4			
<b>MEDICAL</b>				
(Equipment to be carried as per protocol of the responding agency)				
Basic life support medical kit	1			
Emergency blankets	4			
Spine board (flotation back board)	1			
Stokes type litter with flotation - plastic or metal	1			
<b>TEAM EQUIPMENT</b>				
Axe/handsaw	1			
Body bag	2			
Carabineer, locking "D" steel	12			
Chainsaw w/kit	*			
Collection rings/Accountability	*			
Compass	1			
Dust mask, disposable	4			
Edge protection	2			
Rigging plates	2			
Forcible entry tool	1			
Fuel cans, transportable	2			
GPS, hand-held	*			
Hammer, sledge	*			
Helmet, victim	*			
Jacket, exposure	4			
Line thrower	*			
Mask, dive	*			

Swiftwater Rescue / Flood Evacuation  
Swiftwater **Type 3a** Inspection Checklist

Organization Name \_\_\_\_\_ Date of Inspection \_\_\_\_\_

	Swiftwater Type 3a	Present	Deficient	Corrected at Re- inspection
<b>TEAM EQUIPMENT</b>				
PFD, Type III, victim assortment (USCG approved & child)	4			
Pole, reaching (pike or equivalent)	1			
Prusik's 8mm	4			
Pulleys, rescue rated	2			
Rope 200' w/bag (life safety) ½" minimum (dedicated solely for supporting people during emergency operations and training evolutions)	2			
Rope 300' w/bag (life safety) ½" minimum (dedicated solely for supporting people during emergency operations and training evolutions)	1			
Shovel, hand	1			
Snorkel	*			
Storage containers as needed	*			
Swimmer rescue board	2			
Throw bags: poly 3/8 or greater, Various lengths. 50 to 75 ft of water rescue rope appropriately sized bag and closed cell foam float	4			
Webbing 1" x 20' nylon tubular (green)	8			
Webbing 1" x 50' nylon tubular (yellow)	3			
<b>RESCUE BOATS</b>				
Air, manual inflation pump	1			
Boat, non-powered, 4 person minimum, self bailing	1			
Compressed air cylinder (60 min/IRB inflation)	*			
Sound producing device, 1 per boat	1			
Throwable flotation device (Ring-USCG approved)	1			
<b>PERSONAL EQUIPMENT</b>				
Aerial flares	8			
Carabineers	8			
Dry gear bags	2			
Dry suits	2			
Eye protection	4			
Flashlight	4			
Gloves - water	4			
Gloves - leather	4			
Handheld flares	4			
Headlamps, waterproof	4			



	<b>Swiftwater Type 3a</b>	<b>Present</b>	<b>Deficient</b>	<b>Corrected at Re- inspection</b>
Helmet, swiftwater	4			
Ice saws	2			
Ice staphs	2			
Chemical light sticks	4			
PFD, Type V (USCG approved)	4			
Rescue knives	4			
Water boots no dive type booties	4			
Whistles	4			

Swiftwater Rescue / Flood Evacuation  
Swiftwater **Type 4a** Inspection Checklist

Organization Name \_\_\_\_\_ Date of Inspection \_\_\_\_\_

	<b>Swiftwater Type 4a</b>	<b>Present</b>	<b>Deficient</b>	<b>Corrected at Re- inspection</b>
	<b>3 Member</b>			
<b>COMMUNICATIONS</b>				
Bags, waterproof, radio	2			
Battery, spare/charger	2			
Phone: cellular	1			
Radio: portable	3			
<b>MEDICAL</b>				
(Equipment to be carried as per protocol of the responding agency)				
Basic life support medical kit	1			
Spine board (flotation back board)	1			
Stokes type litter with flotation - plastic or metal	1			
<b>TEAM EQUIPMENT</b>				
Axe/handsaw	1			
Body bag	*			
Chainsaw w/kit	*			
Compass	*			
Dust mask, disposable	3			
Rigging plates	*			
Forcible entry tool	1			
GPS, hand-held	*			
Hammer, sledge	*			
Helmet, victim	*			
Jacket, exposure	3			
Line thrower	*			
Megaphone/PA	*			

Swiftwater Rescue / Flood Evacuation  
 Swiftwater **Type 4a** Inspection Checklist

Organization Name \_\_\_\_\_ Date of Inspection \_\_\_\_\_

		Present	Deficient	Corrected at Re- inspection
<b>TEAM EQUIPMENT</b>				
Night vision, hand	*			
PFD, Type III, victim assortment (USCG approved & child)	4			
Pole, reaching (pike or equivalent)	1			
Prusik's 8mm	2			
Pulleys, rescue rated	2			
Rope 200' w/bag (life safety) ½" minimum (dedicated solely for supporting people during emergency operations and training evolutions)	1			
Shovel, hand	1			
Storage containers as needed	*			
Throw bags: poly 3/8 or greater, Various lengths. 50 to 75 ft of water rescue rope appropriately sized bag and closed cell foam float	3			
Throwable flotation device (USCG approved)	*			
Webbing 1" x 20' nylon tubular (green)	4			
<b>PERSONAL EQUIPMENT</b>				
Aerial flares	6			
Carabineers	6			
Dry suits	3			
Eye protection	3			
Flashlight	3			
Gloves - water	3			
Gloves - leather	3			
Headlamps, waterproof	3			
Helmet, swiftwater	3			
Chemical light sticks	3			
PFD, Type III (USCG approved)	3			
Rescue knives	3			
Water boots no dive type booties	3			
Whistles	3			

Swiftwater Rescue / Flood Evacuation  
**Flood Evacuation** Team Inspection Checklist

Organization Name \_\_\_\_\_ Date of Inspection \_\_\_\_\_

	Flood Evacuation	Present	Deficient	Corrected at Re- inspection
<b>COMMUNICATIONS</b>				
Bags, waterproof, radio	1			
Battery, spare/charger	1			
Phone: cellular	1			
Radio: portable	1			
<b>MEDICAL</b>				
(Equipment to be carried as per protocol of the responding agency)				
Basic life support medical kit	1			
<b>TEAM EQUIPMENT</b>				
Axe/handsaw	1			
Body bag	*			
Chainsaw w/kit	*			
Compass	*			
Dust mask, disposable	2			
Forcible entry tool	1			
Fuel cans, transportable	2			
GPS, hand-held	*			
Helmet, victim	*			
Jacket, exposure	2			
Megaphone/PA	*			
Night vision, hand	*			
PFD, Type III, victim assortment (USCG approved & child)	4			
Pole, reaching (pike or equivalent)	1			
Storage containers as needed	*			
Throw bags: poly 3/8 or greater, Various lengths. 50 to 75 ft of water rescue rope appropriately sized bag and closed cell foam float	2			
<b>RESCUE BOATS</b>				
Air, manual inflation pump	1			
Boat, non-powered, 4 person minimum, self bailing	1			
Kit, patch/repair/maintenance (appropriate for each type boat deployed)	1			

	<b>Flood Evacuation</b>	<b>Present</b>	<b>Deficient</b>	<b>Corrected at Re- inspection</b>
Lanyard, wrist, kill switch	1			
Boat with motor, 15HP (minimum), or based on the manufacturer's minimum power recommended, prop w/guard or jet. A minimum of one (1) self-bailing boat is required. Each boat must be equipped in a manner to meet all state boating law requirements.	1			
Motor flush kit, appropriate to boat	1			
Paddles 2 per boat	1			
Prop, spare 1 per boat	1			
Fire extinguisher minimum of 1 per boat, must meet fed/state requirement	1			
Oils, fuels	1			
Compressed air cylinder (60 min/IRB inflation)	*			
Sound producing device, 1 per boat	1			
Throwable flotation device (USCG approved)	1			
<b>PERSONAL EQUIPMENT</b>				
Aerial flares	4			
Carabineers	4			
Eye protection	2			
Flashlight	2			
Gloves - water	2			
Gloves - leather	2			
Handheld flares	2			
Headlamps, waterproof	2			
Helmet, swiftwater	2			
Chemical light sticks	2			
PFD, Type III (USCG approved)	2			
Rescue knives	2			
Water boots no dive type booties	2			
Whistles	2			

**APPENDIX E**

**Swiftwater Rescue Roster**

## APPENDIX E

### Swiftwater Rescue Roster Instructions

1. The attached roster is a 3 page document with training required by each team member listed on the 3 pages
2. List the team member's name on each page on the corresponding line.
3. For training with certification numbers, list the certification number.
4. For training with completion dates, list the date completed.
5. Guide to training abbreviations:
  - a. Annual Skills Proficiency – Date Completed
  - b. Annual Swim Demonstration – Date Completed
  - c. EMS Level
    - i. A – First Responder
    - ii. B – Emergency Medical Technician (EMT)
    - iii. C – Paramedic
    - iv. D – Pre-Hospital RN (PHRN)
    - v. E – Health Care Professional (HP)
  - d. Haz Mat Level
    - i. HMO – Hazardous Materials Operations
    - ii. HMT – Hazardous Materials Technician
  - e. ICS Training - Date Completed or N/A
  - f. Helicopter Awareness – Date Completed
  - g. Search Management – Date Completed
  - h. Water Rescue for the First Responder – Date Completed
  - i. Water Rescue Emergency Response – Date Completed
  - j. Emergency Boat Operations and Rescue – Date Completed
  - k. Advanced Line System Rescue – Date Completed
  - l. Ice Rescue Emergency Response – Date Completed
6. Document may be filled out in writing, or an electronic copy may be submitted if accompanied by a hard copy









# **APPENDIX F**

## **Act 168 Form**

**PENNSYLVANIA VOLUNTARY FIRE SERVICE**  
**Act 168 Form**

**Act 168 of 2006 amended Title 18 (Crimes and Offenses) of the Pennsylvania Consolidated Statutes, Section 2, subsection (h) (1) Arson and related offenses reads:**

*“A person convicted of violating this section or any similar offense under Federal or State law shall be prohibited from serving as a firefighter in this Commonwealth and shall be prohibited from being certified as a firefighter under Section 4 of the Act of November 13, 1995 (P.L. 604, No.61), known as the State Fire Commissioner Act.”*

**All individuals making application for certification testing must provide documentation of a background check. Proof of a non-conviction MUST consist of *either* of the following:**

- 1. An official criminal history record check obtained pursuant to Chapter 91 (relating to criminal history record information) indicating no arson convictions.**

**OR**

- 2. By dating and signing of the following statement by the person swearing to the following:**

*“I have never been convicted of an offense that constitutes the crime of “arson and related offenses” under 18 Pa.C.S 3301 or any similar offense under any Federal or State law. I hereby certify that the statements contained herein are true and correct to the best of my knowledge and belief. I understand that if I knowingly make any false statement herein, I am subject to penalties prescribed by law, including, but not limited to, a fine of at least \$1,000.00”*

---

**Signature of Certification Evaluator Candidate**

---

**Name of Certification Evaluator Candidate (please print or type)**

---

**Date**

# **APPENDIX G**

## **Application**



**FOR PENNSYLVANIA DEPARTMENT OF HEALTH  
USE ONLY**

Date Received: \_\_\_\_\_

Regional Council: \_\_\_\_\_

## APPLICATION FOR VOLUNTARY RESCUE SERVICE RECOGNITION

### 1. SERVICE IDENTIFICATION:

\_\_\_\_\_  
BUSINESS/CORPORATE NAME OF RESCUE SERVICE

\_\_\_\_\_  
IDENTIFYING NAME OF RESCUE SERVICE

PHYSICAL LOCATION OF RESCUE SERVICE HEADQUARTERS (*must be supplied*):

\_\_\_\_\_  
(STREET, RD, ROUTE, ETC.)

\_\_\_\_\_  
CITY

\_\_\_\_\_  
STATE

\_\_\_\_\_  
ZIP CODE + 4

MAILING ADDRESS OF RESCUE SERVICE: (*must be supplied*):

\_\_\_\_\_  
(STREET, P.O BOX, R.D., ROUTE, ETC.)

\_\_\_\_\_  
CITY

\_\_\_\_\_  
STATE

\_\_\_\_\_  
ZIP CODE +4

DAYLIGHT CONTACT PERSON: \_\_\_\_\_

BUSINESS TELEPHONE: ( \_\_\_\_\_ ) \_\_\_\_\_

Physical address locations of any substations, other than headquarters, where vehicles are stationed full-time (if applicable):

a. \_\_\_\_\_  
(STREET, R.D., ROUTE, ETC.)

\_\_\_\_\_  
CITY

\_\_\_\_\_  
STATE

\_\_\_\_\_  
ZIP CODE +4

b. \_\_\_\_\_  
(STREET, R.D., ROUTE, ETC.)

\_\_\_\_\_  
CITY

\_\_\_\_\_  
STATE

\_\_\_\_\_  
ZIP CODE +4

(ATTACH ADDITIONAL SHEETS, IF NECESSARY)

**Principal Official:** *(Administrative)*

---

(PLEASE PRINT)

---

TITLE

TELEPHONE

**2. SERVICE CLASSIFICATION: (check all that apply)**

**Type of Organization**

<input type="checkbox"/> INDUSTRY
<input type="checkbox"/> NON-PROFIT
<input type="checkbox"/> FOR PROFIT
<input type="checkbox"/> CAREER
<input type="checkbox"/> VOLUNTEER

<input type="checkbox"/> FIRE SERVICE
<input type="checkbox"/> EMS
<input type="checkbox"/> POLICE
<input type="checkbox"/> GOVERNMENT
<input type="checkbox"/> OTHER_____

ARE YOU QRS AFFILIATED AND/OR RECOGNIZED?     YES     NO

**3. TYPE AND LEVEL OF SERVICE:**

- Vehicle and Machinery     Basic     Operations     Advanced
- Swiftwater     Type 1a     Type 2a     Type 3a     Type 4a     Flood Evacuation

**Primary Service Areas**

- |          |          |
|----------|----------|
| 1. _____ | 4. _____ |
| 2. _____ | 5. _____ |
| 3. _____ | 6. _____ |

**4. Dispatch Procedures:**

b. Method of Dispatch For Emergency Calls

- Providers Headquarters
- County 9-1-1 Center
- Municipal 9-1-1 Center
- Police Department
- Other (explain)

---

---

---

---

---

---

---

---

**5. VERIFICATION OF INFORMATION:**

I, \_\_\_\_\_ have reviewed this application and all of  
(Name of Principal Official)

the information contained herein, or submitted separately in support of the application, and verify that the information is accurate and complete.

\_\_\_\_\_  
Signature of Principal Official

\_\_\_\_\_  
Date

**NOTE:** 18 Pa. C.S. Section 4904 provides that it shall be a crime to make written, false statement, or to submit any document which is false, to a public servant and, upon conviction, shall be punishable by imprisonment, the maximum of which is not more than two (2) years, and a fine not to exceed \$5,000.